



DIN Rail



Non-Metallic Enclosure



Liquid Tight Cable Glands

Non-Metallic Enclosures DIN Rail • Liquid Tight Cable Glands *Table of Contents*




Non-Metallic Enclosures Opaque Cover	382
Non-Metallic Enclosures Clear Cover	383
Non-Metallic Enclosures Accessories	383
Non-Metallic Enclosure Dimensions	384
DIN Rail	385
Liquid Tight Cable Glands CG, PG and NPT Series	386
Liquid Tight Cable Glands AG and EG Series	387



Water Tight • Dust Tight • Oil Tight - Rain Tight

TYPE: 4X - 4 - 12 - 12K - 13 - 3R - 1

Standard Features

- Body Material: High Impact, Double Insulated Noryl Thermoplastic
- Cover Material: Opaque Noryl or Clear Polycarbonate
- Gasketed (Neoprene) Cover
- Resistant to Shock, Corrosion, Chemicals and Atmospheric agents
- Available with or without Knockouts
-  UL Listed File No. E121410 TYPE: 4, 4X, 12, 13, 3R, 1
-  CSA File No. LR96758-2 TYPE: 12, 13, 3R, 1
- 
- Cover Screws: Stainless Steel
- Color: Grey
- Service Temperature: - 40 to +260 F (-40 to +125 C)
- Mounting Plate: 14 Gage Plated Steel
- Molded Internal Pads for attaching Mounting Plate, Din Rail, etc.
- Optional Mounting Brackets Available
- To maintain enclosure UL/CSA rating, the connectors used must be the same UL/CSA rating as the enclosure.
Example: To maintain 4X enclosure rating requires 4X connectors.
- Maximum Cover Screw Tightening Torque: 7 in-lbs.

Opaque Cover without Knockouts



293244



293241

ENCLOSURE					
CATALOG NUMBER	WT Lbs	OUTSIDE DIMENSIONS (INCHES)			LIST PRICE
		H	W	D	
293210	0.3	4.33	2.95	2.56	\$12.00
293220	0.4	4.33	4.33	2.56	\$13.00
293234	0.5	5.9	4.33	2.95	\$17.00
293264	0.7	5.9	5.9	2.95	\$24.00
293244	0.8	8.66	5.9	2.95	\$34.00
293254	1.6	11.81	8.66	2.95	\$61.00
293205	0.6	7.08	3.54	3.35	\$21.00
293230	0.5	5.9	4.33	3.94	\$19.00
293260	0.8	5.9	5.9	3.94	\$26.00
293240	0.9	8.66	5.9	3.94	\$38.00
293250	1.8	11.81	8.66	3.94	\$64.00
293261	0.9	5.9	5.9	5.9	\$28.00
293241	1.1	8.66	5.9	5.9	\$44.00
293251	2.1	11.81	8.66	5.9	\$74.00
293221	0.5	4.3	4.3	4.4	\$15.50

MOUNTING PLATE		
CATALOG NUMBER	WT Lbs	LIST PRICE
-	-	-
293320	0.1	\$5.00
293330	0.2	\$5.00
293360	0.4	\$6.60
293340	0.6	\$8.00
293350	1.4	\$12.50
-	-	-
293330	0.2	\$5.00
293360	0.4	\$6.60
293340	0.6	\$8.00
293350	1.4	\$12.50
293360	0.4	\$6.60
293340	0.6	\$8.00
293350	1.4	\$12.50
293320	0.1	\$5.00

Opaque Cover with NPT Knockouts



293741

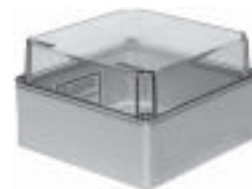
ENCLOSURE						
K.O. CODE	CATALOG NUMBER	WT Lbs	OUTSIDE DIMENSIONS (INCHES)			LIST PRICE
			H	W	D	
C	293720	0.4	4.33	4.33	2.56	\$14.00
E	293734	0.5	5.9	4.33	2.59	\$18.00
D	293764	0.7	5.9	5.9	2.59	\$26.00
A	293744	0.8	8.66	5.9	2.59	\$38.00
B	293754	1.6	11.81	8.66	2.59	\$65.00
C	293705	0.6	7.08	3.54	3.35	\$23.00
E	293730	0.5	5.9	4.33	3.94	\$21.00
D	293760	0.8	5.9	5.9	3.94	\$28.00
A	293740	0.9	8.66	5.9	3.94	\$41.00
B	293750	1.8	11.81	8.66	3.94	\$67.00
D	293761	0.9	5.9	5.9	5.9	\$30.00
A	293741	1.1	8.66	5.9	5.9	\$46.00
B	293751	2.1	11.81	8.66	5.9	\$78.00

MOUNTING PLATE		
CATALOG NUMBER	WT Lbs	LIST PRICE
293320	0.1	\$5.00
293330	0.2	\$5.00
293360	0.4	\$6.60
293340	0.6	\$8.00
293350	1.4	\$12.50
-	-	-
293330	0.1	\$5.00
293360	0.4	\$6.60
293340	0.6	\$8.00
293350	1.4	\$12.50
293360	0.4	\$6.60
293340	0.6	\$8.00
293350	1.4	\$12.50

Clear Cover Polycarbonate without Knockouts

ENCLOSURE					
CATALOG NUMBER	WT Lbs	OUTSIDE DIMENSIONS (INCHES)			LIST PRICE
		H	W	D	
293239	0.5	5.9	4.33	2.95	\$25.00
293269	0.6	5.9	5.9	2.95	\$35.00
293249	0.8	8.66	5.9	2.95	\$52.00
293259	1.6	11.81	8.66	2.95	\$89.00
293235	0.5	5.9	4.33	3.94	\$25.00
293265	0.8	5.9	5.9	3.94	\$37.00
293245	0.9	8.66	5.9	3.94	\$55.00
293255	1.8	11.81	8.66	3.94	\$92.00
293266	0.9	5.9	5.9	5.9	\$44.00
293246	1.1	8.66	5.9	5.9	\$69.00
293256	2.1	11.81	8.66	5.9	\$108.00

MOUNTING PLATE		
CATALOG NUMBER	WT Lbs	LIST PRICE
293330	0.2	\$5.00
293360	0.4	\$6.60
293340	0.6	\$8.00
293350	1.4	\$12.50
293330	0.2	\$5.00
293360	0.4	\$6.60
293340	0.6	\$8.00
293350	1.4	\$12.50
293360	0.4	\$6.60
293340	0.6	\$8.00
293350	1.4	\$12.50



293245



293246

Accessories

CATALOG NUMBER	WT Lbs	DESCRIPTION	USE with BOX SIZE	LIST PRICE
293331	0.1	DIN Rail Standard 35 mm Zinc Oxide Plated Steel For Mounting Components into Enclosure	4.33 x 2.95	\$5.00
	4.33 x 4.33			
	5.90 x 4.33			
293332	0.1		5.9 x 4.33	\$7.00
	5.9 x 5.9			
	8.66 x 5.9			
293339	0.1		7.08 x 3.54	\$8.00
293333	0.2		11.88 x 8.66	\$9.00
293315	0.1	Non-Metallic Mounting Foot Kit 1 Right & 1 Left Mounting Foot complete with 2 Screws	ALL	\$2.50



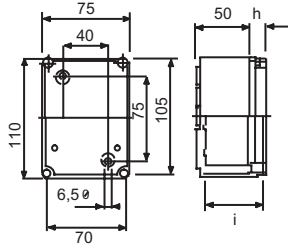
293331



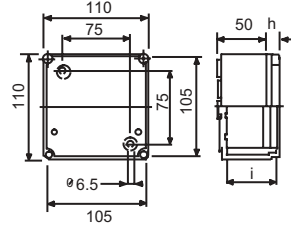
293315 (KIT)

Dimensions:

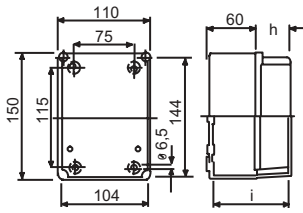
Note: Dimensions are in Millimeters. Inches = mm / 25.4



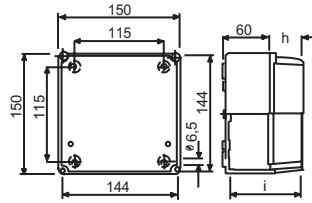
CATALOG NUMBER	h	i
293210	15	53.5



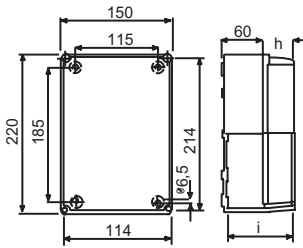
CATALOG NUMBER	h	i
293220	15	62.5
293270	15	62.5
293221	62	100.5



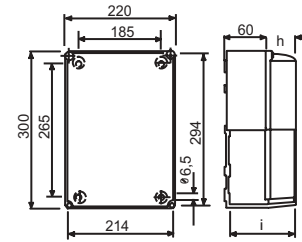
CATALOG NUMBER	h	i
293234	15	62.5
293230	40	87.5
293734	15	62.5
293730	40	87.5
293239	15	62.5
293235	40	87.5



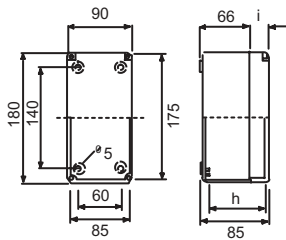
CATALOG NUMBER	h	i
293264	15	62.5
293260	40	87.5
293261	90	137.5
293764	15	62.5
293760	40	87.5
293761	90	137.5
293269	15	62.5
293265	40	87.5
293266	90	137.5



CATALOG NUMBER	h	i
293244	15	62.5
293240	40	87.5
293241	90	137.5
293744	15	62.5
293740	40	87.5
293741	90	137.5
293749	15	62.5
293245	40	87.5
293246	90	137.5



CATALOG NUMBER	h	i
293245	15	62.5
293250	40	87.5
293251	90	137.53
293754	15	62.5
293750	40	87.5
293751	90	137.5
293259	15	62.5
293255	40	87.5
293256	90	137.5

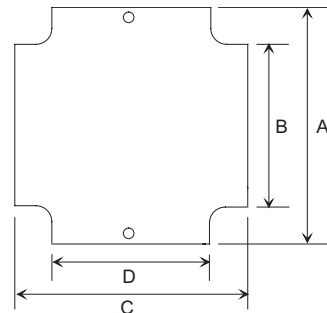


CATALOG NUMBER	h	i
293205	19	55
293705	19	55

Mounting Plate Dimensions

CATALOG NUMBER	A	B	C	D
293320	88	60	88	60
293330	126	102	88	60
293340	198	170	126	102
293350	275	247	195	167
293360	126	102	126	102

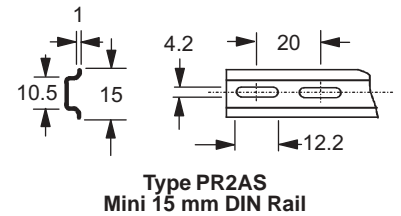
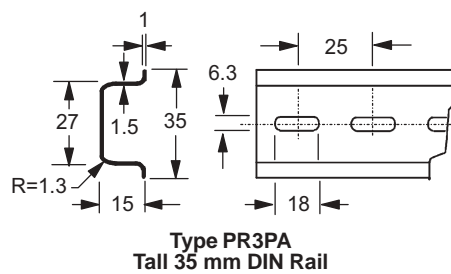
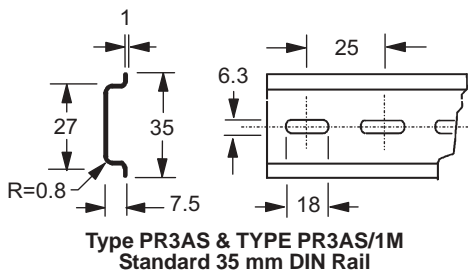
KNOCKOUT CODE	KNOCKOUTS		
	1/2 NPT	3/4 NPT	1/2 - 3/4 NPT
A	8		4
B	8	4	4
C	8		
D			8
E	4		4



DIN Mounting Rail

ACI DIN Mounting Rail is manufactured to DIN standards and interchanges with all other DIN Rail. The steel mounting rail is zinc coated to protect against rust and is slotted to provide easy assembly to backplate. Standard package quantity is 40 meters total length. Minimum order is 5 pieces.

LENGTH	TYPE	CATALOG NUMBER	WT Lbs	LIST PRICE
2 METER	PR3AS	104205	1.4/2m	\$16.30/2m
1 METER	PR3AS/1M	117537	0.7/1m	\$8.15/1m
2 METER	PR2AS	104204	0.7/2m	\$15.00/2m
2 METER	PR3PA	104206	2.8/2m	\$23.00/2m

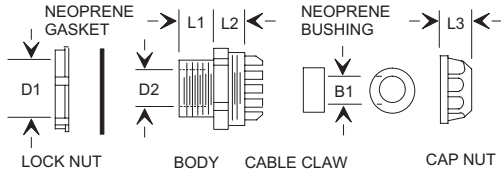


CG Series • PG Series with Cable Strain Relief

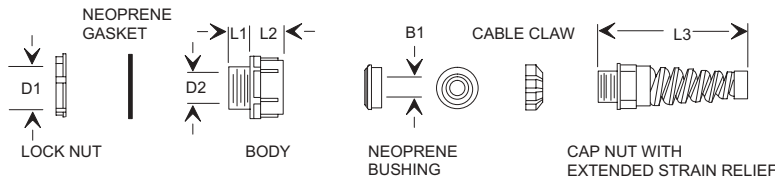
- Molded from UL approved nylon 66 94V-2 (black) material
- Cable claw is molded as an integral part of the body, minimizing assembly time
- Neoprene bushing provides excellent strain relief and weather tight assembly
- Dome shaped cap nut sheds water away from the cable entrance
- Lock nut included as standard



CG Series



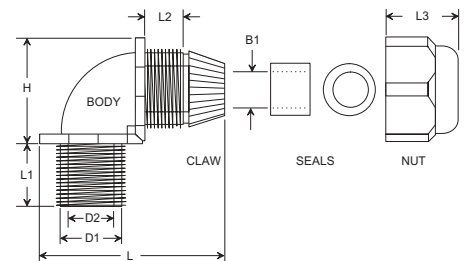
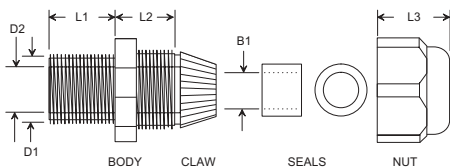
PG Series with Cable Strain Relief



SERIES	CABLE DIAMETER		THREAD	D1	D2	B1	L1	L2	L3	STD PACK	CATALOG NUMBER	Pkg WT Lbs	LIST PRICE EACH
	INCH	mm											
CG	0.20 - 0.40	5 - 10	1/2" NPT	20.8	11.0	13.0	9.5	14.0	18.7	50	106162	1.3	\$1.57
CG	0.24 - 0.51	6 - 13	1/2" NPT	20.8	14.7	14.7	9.5	16.0	18.5	50	106165	1.8	\$1.68
PG	0.20 - 0.40	5 - 10	1.5 mm	16	11.0	7 - 10	12	17	62	50	106182	1.3	\$1.92
PG	0.24 - 0.51	6 - 13	1.5 mm	20	14.7	9 - 13	13	19	78	50	106183	1.8	\$2.14

NPT Series Straight and Right Angle

- Molded from UL approved nylon 66 94V-2 (black) material
- Cable claw is molded as an integral part of the body, minimizing assembly time
- Neoprene bushing provides excellent strain relief and weather tight assembly
- Dome shaped cap nut sheds water away from the cable entrance
- Lock Nut and Washer Sold Separately - See Below



CABLE DIAMETER (mm)	THREAD NPT	D1	D2	B1	L1	L2	L3	L	H	STRAIGHT CABLE GLAND		
										CATALOG NUMBER	PKG QTY	LIST PRICE EACH
3 - 6.5	1/4"	13.2	8.3	6.0	7.6	12.7	13.2	-	-	121052	50	\$1.28
5 - 10	3/8"	16.4	10.7	9.0	14.6	13.7	16.8	-	-	121053	50	\$1.47
10 - 14	1/2"	20.7	14.9	12.7	12.5	18.8	18.4	-	-	121054	50	\$1.67
13 - 18	3/4"	25.6	18.5	16.5	14.6	17.8	22.3	-	-	121055	50	\$1.78
18 - 25	1"	33.0	26.0	23.7	14.7	20.6	27.2	-	-	121056	25	\$2.40
22 - 32	1 1/4"	41.7	32.0	29.0	17.9	22.4	31.4	-	-	121057	10	\$3.84

LOCK NUT		
CATALOG NUMBER	PKG QTY	LIST PRICE EACH
121165	100	\$0.17
121166	100	\$0.20
121167	100	\$0.23
121168	100	\$0.26
121169	100	\$0.34
121170	100	\$0.50

GASKET		
CATALOG NUMBER	PKG QTY	LIST PRICE EACH
121171	100	\$0.11
121172	100	\$0.13
121173	100	\$0.16
121174	100	\$0.18
121175	100	\$0.24
121176	100	\$0.35

CABLE DIAMETER (mm)	THREAD NPT	D1	D2	B1	L1	L2	L3	L	H	RIGHT ANGLE CABLE GLAND		
										CATALOG NUMBER	PKG QTY	LIST PRICE EACH
5 - 9	3/8"	16.6	12	9.3	11.7	9.85	16.7	48.5	30	121161	20	\$4.05
10 - 13	1/2"	21.0	14.0	13.0	14.7	11.75	18.4	51.6	31.2	121162	20	\$5.05
13 - 16	3/4"	26.3	19.2	16.4	14.8	12.55	22.3	64.5	41.6	121163	20	\$7.55
22 - 29	1 1/4"	41.7	31.6	29.3	18.8	16.25	31.0	86.0	53.0	121164	10	\$14.05

LOCK NUT		
CATALOG NUMBER	PKG QTY	LIST PRICE EACH
121166	100	\$0.20
121167	100	\$0.23
121168	100	\$0.26
121170	100	\$0.50

GASKET		
CATALOG NUMBER	PKG QTY	LIST PRICE EACH
121172	100	\$0.13
121173	100	\$0.16
121174	100	\$0.18
121176	100	\$0.35

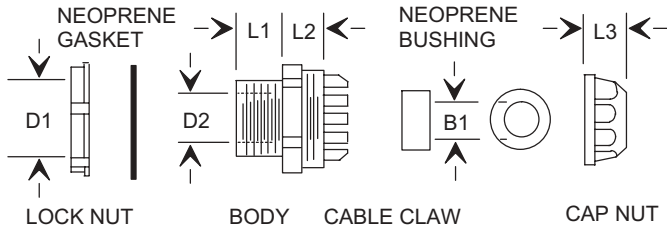
Note: Dimensions are in millimeters. Inches = mm / 25.4

AG and EG Series

- Molded from UL approved nylon 66 94V-2 (black) material
- Cable claw is molded as an integral part of the body, minimizing assembly time
- Neoprene bushing provides excellent strain relief and weather tight assembly
- Dome shaped cap nut sheds water away from the cable entrance
- Lock nut included as standard

- **AG series have 1.5 mm pitch thread**
- **EG series have standard metric PG thread**

Note: Dimensions are in millimeters. Inches = mm / 25.4



AG Series, 1.5 mm Pitch Thread

CABLE DIAMETER		THREAD	D1	D2	B1	L1	L2	L3	STD PACK	CATALOG NUMBER	Pkg WT Lbs	LIST PRICE EACH
INCH	mm											
0.12 - 0.25	3 - 6.5	1.5 mm	12	8.5	4.6	8.0	13.9	13.1	50	116486	0.9	\$1.32
0.20 - 0.39	5 - 10	1.5 mm	16	11.0	9.3	14.3	15.1	16.6	50	116487	1.3	\$1.57
0.39 - 0.55	10 - 14	1.5 mm	20	14.7	13.0	12.0	14.2	18.1	50	116488	1.8	\$1.68
0.51 - 0.71	13 - 18	1.5 mm	25	18.1	16.1	13.1	18.2	22.1	50	116489	3.0	\$1.79
0.71 - 0.98	18 - 25	1.5 mm	32	26.0	24.9	14.3	19.4	25.0	25	116490	2.5	\$2.61
0.87 - 1.26	22 - 32	1.5 mm	40	31.9	30.6	17.9	17.0	30.5	10	116491	2.0	\$4.64
1.18 - 1.50	30 - 38	1.5 mm	50	41.9	38.0	17.9	17.7	30.5	10	116492	2.2	\$15.00
1.34 - 1.73	34 - 44	1.5 mm	63	55.1	43.0	17.9	18.2	31.5	10	116493	2.5	\$22.50

EG Series, Standard Metric PG Thread

CABLE DIAMETER		THREAD	D1	D2	B1	L1	L2	L3	STD PACK	CATALOG NUMBER	Pkg WT Lbs	LIST PRICE EACH
INCH	mm											
0.12 - 0.25	3 - 6.5	PG7	12.8	8.5	4.6	8.0	13.9	13.1	50	106176	0.5	\$1.34
0.16 - 0.31	4 - 8	PG9	15.6	10.2	5.4	8.0	14.8	15.2	50	106177	0.8	\$1.41
0.20 - 0.39	5 - 10	PG11	18.8	13.6	6.0	8.0	16.0	16.0	50	106172	1.1	\$1.57
0.24 - 0.47	6 - 12	PG13.5	20.0	15.8	12.4	9.0	17.3	18.9	50	106173	1.3	\$1.68
0.39 - 0.55	10 - 14	PG16	22.5	17.4	12.8	10.0	18.1	19.5	50	106174	1.8	\$1.79
0.51 - 0.71	13 - 18	PG21	28.5	23.0	17.9	10.7	20.8	23.2	50	106175	2.5	\$2.50
0.71 - 0.98	18 - 25	PG29	36.4	30.5	24.6	10.8	19.3	27.3	25	116510	2.1	\$3.25
0.87 - 1.26	22 - 32	PG36	44.8	35.0	36.0	14.3	24.5	30.0	10	116511	1.8	\$3.80
1.18 - 1.50	28 - 38	PG42	50.9	39.9	40.5	14.3	25.4	31.4	10	116512	2.3	\$11.25
1.34 - 1.73	34 - 44	PG48	56.1	45.9	46.0	15.3	25.4	31.7	10	116513	2.3	\$15.75