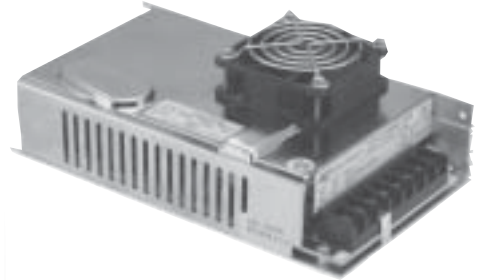
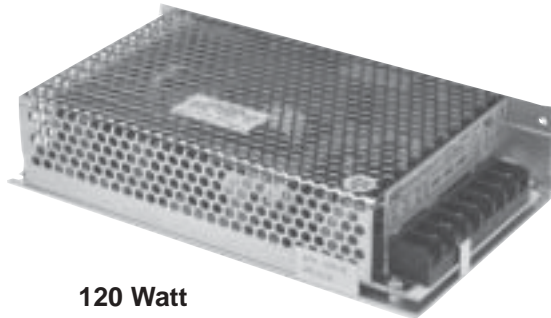




60 Watt  
116239



240 Watt  
116242



120 Watt  
116253

## Enclosed Switching Power Supplies

### Table of Contents

---

Enclosed Switching Power Supplies .....	326
Technical Specifications .....	327
Dimensions .....	327



30 • 60 • 120 • 130 • 160 • 240 Watt

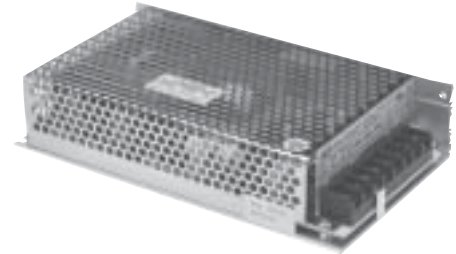
Advance Controls, Inc. Enclosed Switching Power Supplies have high regulation and controlled output. These power supplies are widely used to power PLC's, other computer controlled equipment, proximity switches, photoelectric switches, small DC alarms, small DC solenoids and other DC equipment.

### Features

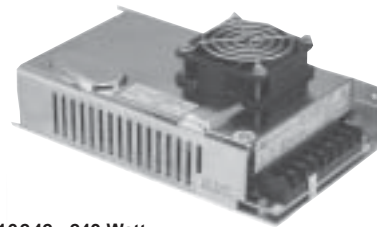
- **Automatically selected input**  
90 - 240 VAC (30 - 60 Watt units)
- **Manually selectable input**  
115 or 230 VAC (120 - 160 - 240 Watt units)
- **High efficiency**
- **Compact package**
- **EMI shielded**
- **Hi Pot Tested**
- **Full burn in**
- **Overload protected**
- **Short circuit protected**
- **On / Off LED Indicator**
- **Heat Sink** - Oversized aluminum
- **Easy wire Terminal Strip**
- **Finger Safe Terminals**, 30 and 60 Watt
- **DIN Rail mount** (optional)
- **UL508 Listed** at full power




116239 - 60 Watt



116240 - 120 Watt

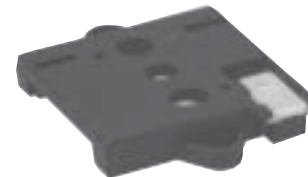


116242 - 240 Watt

OUTPUT			c  US UL508 LISTED	CATALOG NUMBER	WT Lbs	LIST PRICE
POWER Watts	VOLTAGE VDC	CURRENT Amps				
30	24	1.3	YES	118303	0.7	\$112
60	24	2.5	YES	116239	0.8	\$131
120	5	24	YES	116253	1.6	\$160
120	12	10	YES	116254	1.6	\$164
120	24	5	YES	116240	1.6	\$168
160	12	13.5	YES	116256	1.7	\$183
160	24	6.5	YES	116241	1.7	\$191
240	24	10	YES	116242	2.0	\$219
130	+5 / -5 / +12	15 / 1 / 4	YES	116257	1.7	\$152

### DIN Rail Mounting Adaptor

- Mounts Power Supply to standard Din Rail
- Non-Metallic construction to prevent transmittal of electrical noise
- Easy installation using two (2) screws (furnished)



CATALOG NUMBER	WT Lbs	LIST PRICE
117522	0.5	\$10



Listed Industrial Control Equipment  
File Number: E202950



**30 • 60 • 120 • 130 • 160 • 240 Watt**

**Specifications**

CATALOG NUMBER	118303	116239	116253	116254	116240	116256	116241	116242	116257
SIZE (Watts)	30	60	120	120	120	160	160	240	130

**Input Specifications**

Voltage	90 - 240 VAC		90 - 130 VAC and / or 180 - 260 VAC						
Frequency (Hz)	47 - 63 Hz		47 - 63 Hz						
Inrush Current	20 amps @ 132 volt		40 amps @ 132 volt						
Line Regulation (%)	± 1 %		± 1 %						
Current (Amps) @ 115/230 VAC	1.5 / 0.75	1.5 / 0.75	2.2 / 1.1	2.2 / 1.1	2.2 / 1.1	2.5 / 1.3	2.5 / 1.3	3 / 1.5	2 / 1
Internal Fuse (Amps)	2	2	4	4	4	5	5	5	5

**Output Specifications**

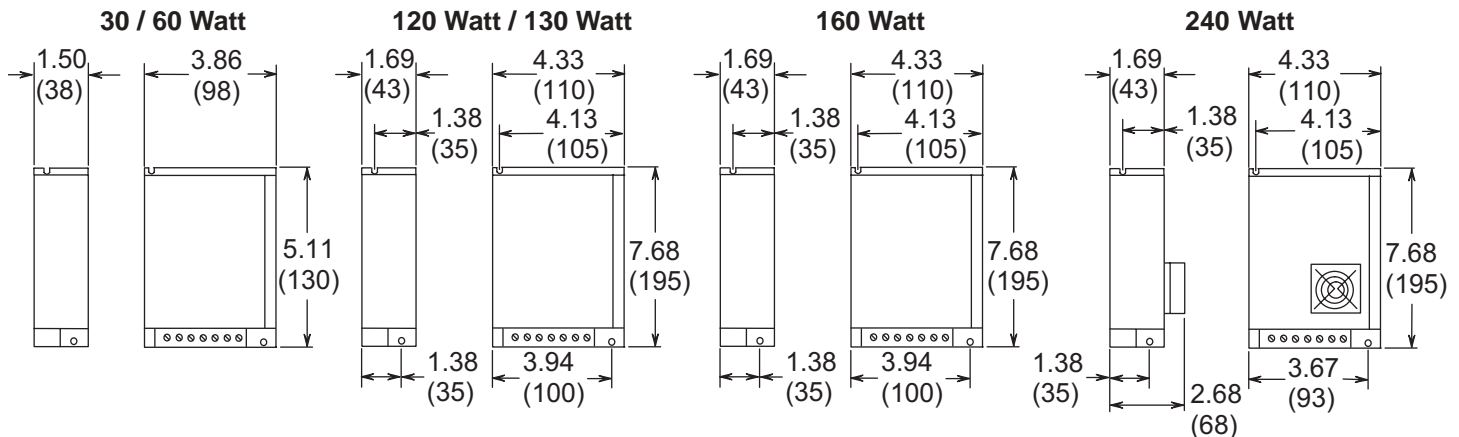
Power (Watts)	30	60	120	120	120	160	160	240	75/5/48
Voltage (VDC)	24	24	5	12	24	12	24	24	+5/-5/+12
Current (Amps)	1.3	2.5	20	10	5	13.5	6.6	10	15/1/4
Minimum Load (Amps)	0.1	0.2	0.5	0.5	0.5	0.5	0.5	0.5	1/0.1/0.5
Load Regulation (%)	±2	±2	±2	±2	± 2	±2	±2	±2	±2
Ripple and Noise (mV)	240	240	80	120	240	120	240	240	80/60/120
Short Circuit Protection	Yes	Yes	Yes	Yes	Yes	Yes	Yes	Yes	Yes
Overvoltage Protection (VDC)	27 - 28	27 - 28	5.8 - 6.3	14 - 14.8	27 - 28.8	14 - 14.8	27 - 28.8	27 - 28.8	None

**General Specifications**

Efficiency (%)	> 70								
Ambient Temperature (°C)	0 - 50 °C								
Temperature Regulation (%)	± 1								
Restart Time (sec.)	5								
Hold Time (msec.)	> 16								
Start-up Time (msec.)	< 40								
Overcurrent Protection (%)	120 ± 2	120 ± 2	140 - 160	120 ± 2	120 ± 2	120 ± 2	120 ± 2	120 ± 2	150 - 180
Cooling	Heat Sink	Heat Sink	Heat Sink	Heat Sink	Heat Sink	Heat Sink	Heat Sink	Fan	Heat Sink
UL 508 Listed	Yes	Yes	Yes	Yes	Yes	Yes	Yes	Yes	Yes

**Dimensions**

**Note:** Dimensions are in inches (millimeters).



Page intentionally Left Blank

<< Previous Page | Next Page >>