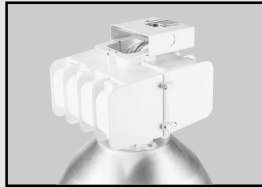


Hook, Cord & Plug – Cat. # 2

Fixture mounting hook with Safety Snap-Lok™. Furnished with a 6' cord and NEMA standard twist lock plug for voltage specified. Approx. shipping weight: 1 lb.



Split Box – Cat. # 0

A 3/4" threaded conduit entry is standard for rigid conduit. Approx. shipping weight: 1 lb.
Thru-Feed: (2) 1/2" knockouts are available for through feed wiring.



Mounting Hook – Cat. # HKSC

The 3/4" threaded mounting safety hook comes standard with the Safety Snap-Lok™ feature.
Approx. shipping weight: 5 ozs.



Power Hook – Cat. # PH (specify voltage)

For use with any of the Industrial fixtures with Hook, Cord & Plug mounting. Provides three threaded knockouts for 3/4" conduit entry, an eye hanger to support the fixture, and a twist lock receptacle to accommodate appropriate plug. Ordering codes are as follows: PH120, PH250(208-240), PH277, PH480.

Available for 120, 208, 240, 277 & 480V. Approx. shipping weight: 1.5 lbs.



Power Hook Adaptor – Cat. # PHA

The Power Hook Adaptor attaches to the Power Hook and allows fastening to a flat surface using the 4 holes provided on the bracket.

Approx. shipping weight: 5ozs.



Ballast/Reflector Safety Chain – Cat. # SC-6

6' long ballast/safety chain provides added security for either Hook, Cord & Plug or Slide Box mounted fixtures. A 12" reflector safety chain section is used for securing the reflector to the ballast housing.

Approx. shipping weight: 7 ozs.



Swivel Pendant – Cat. # SP

3/4" x 18" long pipe is attached to a swivel for mounting to 4" round conduit box only (other lengths are available upon request. Special lengths may require couplers and/or longer lead times. Lengths include threaded ends (1/2" to 3/4" per end -TECHNICAL HOTLINE 1-800-242-5267).

Approx. shipping weight: 2.5 lbs.

External Fuse – Single, Cat. # F; Dual, Cat. # J

Fusing can help troubleshoot a short or overload in the circuit. A single fuse is used for fixtures with a 120 or 277V ballast. A dual fuse is used for fixtures with a 208, 240, or 480V. Approx. shipping weight: 1 oz.

Quartz Restrike Unit – Cat. # Q

Supplies auxiliary lighting after momentary power outage and will automatically extinguish after HID lamp has come up to full power. Available for up to 400 and 1000W for both metal halide and HPS lamps. Uses 150W double jacketed DC based halogen lamp up to 400W fixtures & 250W DC halogen for 1000W fixtures. Approx. shipping weight: 1 oz.

Granular Charcoal Air Filter – Cat. # G

Granular Charcoal Air Filter can be mounted on top of the reflector on all low bays and most high bays. Helps prevent dirt contaminants from entering the optical chamber. Approx. shipping weight: 1 oz.

Twist Lock Receptacle

A NEMA standard twist lock receptacle is available for use with any Industrial light with Hook, Cord & Plug mounting. Catalog number specifies voltage, as follows:

Voltage	NEMA Type
120	L5-15R
208 or 240	L6-15R
277	L7-15R
480	L8-20R

J Series High-2-Low™ Option – Cat. # H

Low voltage switching module shown attached to fixture. See pages 136-139 for full details.

Approx. shipping weight: 8 ozs.

Options & Accessories

