

RNTP Series Round Non-Tapered Steel Poles



Shaft

Fabricated from high grade structural steel tube, the shaft conforms to ASTM specifications. It meets or exceeds minimum yield strength of 55,000 psi. A reinforced hand hole is furnished with cover.

Base Plate

Fabricated from structural quality hot rolled steel, the base plate meets or exceeds minimum yield strength of 36,000 psi. Bolt holes are slotted to provide 1" flexibility on either side of bolt circle centerline.

Anchorage

Anchor bolts are made of hot rolled steel bar with minimum yield strength of 50,000 psi. Bolts have an "L" bend on one end and are threaded on the other end. Bolts are galvanized 12" from the top of the thread and are furnished with two nuts and two washers.

Base Cover

Fabricated from heavy gauge quality carbon steel, the two piece cover conceals base. ABS plastic is supplied with some sizes.

Standard Finish

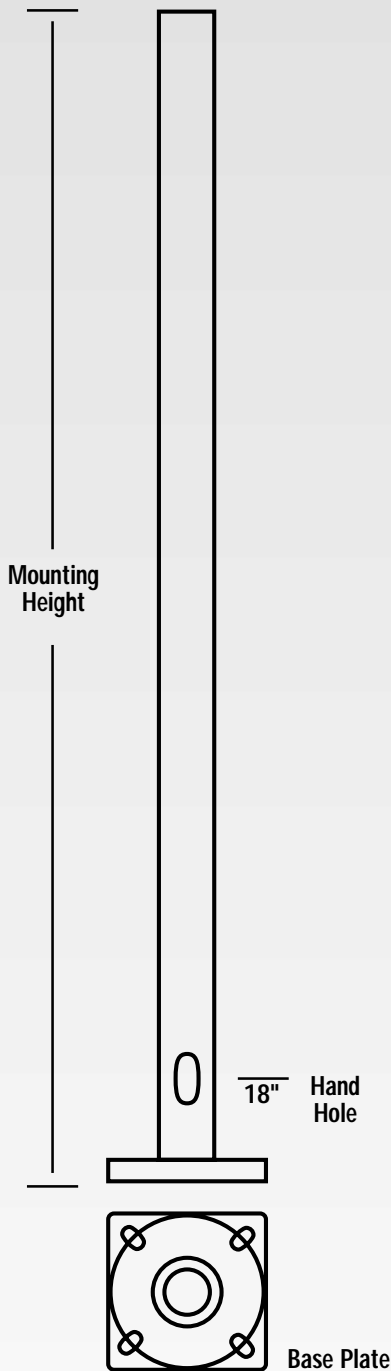
The RNTP Series is furnished with an electrostatically applied red oxide primer over 2 stage cleaning process.

Painted Finish (optional)

A choice of galvanized or painted finish is available (check with factory for cost and color options). The painted finish is an electrostatically applied acrylic enamel over red oxide primer or powder coating, specify color.

Fixture Mounting

RNTP Series mounting options use either a 2-3/8" or a 2-7/8" tenon. See next page for mounting codes.



Round Non-Tapered Steel Poles

Pole Height	Catalog Number	Base Outer Diameter	Pole EPA Ratings				Shipping Wt. (lbs.)
			Base Wind Velocity (MPH) With 1.3 Wind Gust Factor				
			80	90	100	Max. Fix. Wt. (lbs) @ 80 MPH	
10'	RNTP-300V100-(a)(b)	3.0	10.0	7.7	6.0	250	55
	RNTP-400V100-(a)(b)	4.0	19.1	15.0	12.2	480	70
	RNTP-450V100-(a)(b)	4.5	24.5	19.5	15.8	615	75
12'	RNTP-300V120-(a)(b)	3.0	7.7	5.8	4.4	195	60
	RNTP-400V120-(a)(b)	4.0	15.0	11.8	9.5	390	80
	RNTP-450V120-(a)(b)	4.5	19.8	15.7	12.7	495	85
14'	RNTP-300V140-(a)(b)	3.0	6.0	4.4	3.3	175	70
	RNTP-400V140-(a)(b)	4.0	12.2	9.4	7.6	305	90
	RNTP-450V140-(a)(b)	4.5	16.2	12.8	10.3	405	95
16'	RNTP-300V160-(a)(b)	3.0	4.6	3.2	2.3	125	80
	RNTP-400V160-(a)(b)	4.0	9.6	7.4	5.9	250	100
	RNTP-450V160-(a)(b)	4.5	13.1	10.2	8.2	330	105
18'	RNTP-300V180-(a)(b)	3.0	3.4	2.3	1.4	90	90
	RNTP-400V180-(a)(b)	4.0	7.6	5.7	4.5	190	110
	RNTP-450V180-(a)(b)	4.5	10.5	8.2	6.5	265	115
20'	RNTP-300V200-(a)(b)	3.0	2.4	1.4		100	100
	RNTP-400V200-(a)(b)	4.0	6.0	4.45	3.45	150	120
	RNTP-450V200-(a)(b)	4.5	8.5	6.6	5.2	215	130
25'	RNTP-500V200-(a)(b)	5.0	11.75	9.1	7.25	300	145
	RNTP-400V250-(a)(b)	4.0	2.85	1.95	1.35	100	145
	RNTP-450V250-(a)(b)	4.5	4.8	3.6	2.7	130	155
30'	RNTP-500V250-(a)(b)	5.0	7.25	5.5	4.25	180	180
	RNTP-450V300-(a)(b)	4.5	2.3	1.5	1.0	80	185
	RNTP-500V300-(a)(b)	5.0	4.2	3.0	2.25	150	210

Other sizes available upon request.

(a) Pole Finish: Indicate finish in space (a)

Description	Prime	Bronze	Black	Galvanized
	P	BZ	BK	GLV

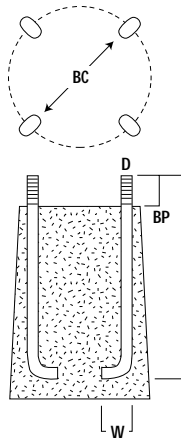
b) Mounting Code: See detail next page.

**Above information is only a guide.
Check manufacturer's specifications for correct data.**

Mounting Code

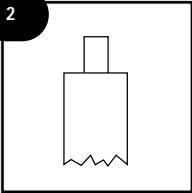
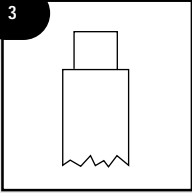
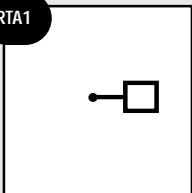
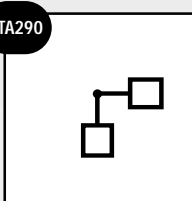
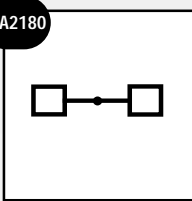
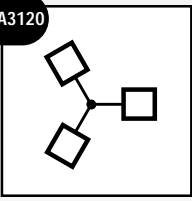
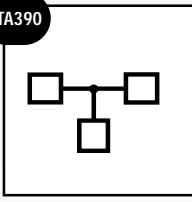
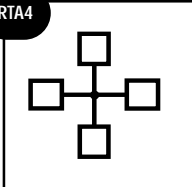
b) Mounting Code: Indicate mounting in space (b)		SUFFIX
Description	(b)	
2-3/8" Tenon (Standard)	2	
2-7/8" Tenon (Special Order)	3	
One Fixture (Use Adaptor)		RTA1
Two Fixtures 90° (Use Adaptor)		RTA290
Two Fixtures 180° (Use Adaptor)		RTA2180
Three Fixtures 120° (Use Adaptor)		RTA3120
Three Fixtures 90° (Use Adaptor)		RTA390
Four Fixtures 90° (Use Adaptor)		RTA4

BC = Bolt Circle Diameter
 BP = Bolt Projection
 D = Anchor Bolt Diameter
 L = Anchor Bolt Length
 W = Anchor Bolt Width



*Above information is only a guide.
 Check manufacturer's specifications for correct
 bolt patterns and anchor bolts.*

RNTP Series Round Non-Tapered Steel Poles

2		2-3/8" Tenon
3		2-7/8" Tenon
RTA1		One Fixture
RTA290		Two Fixtures 90°
RTA2180		Two Fixtures 180°
RTA3120		Three Fixtures 120°
RTA390		Three Fixtures 90°
RTA4		Four Fixtures 90°