

# RTA Series Recessed Remote Electronic Ballast Enclosures

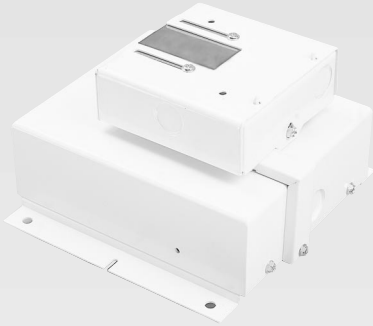


-20°C to 55°C Ambient Rated



RECESSED REMOTE

Dimensions	Fixture Length	Fixture Width	Fixture Depth	Approx. Ship Wt.
	7.6"	7.5"	4.5"	5.5Lbs.



## Lamp NOT Included

True-sinusoidal, high frequency, fully dimmable electronic ballast for 350 - 450W Pulse Start metal halide lamps. Auto voltage input from 208-277 volts with a no-short, no-fail feature. Potted fabricated heavy duty aluminum housing. Can be remote mounted up to 10 feet. Internal cut out for over temperature.

- Full power in <1 minute & full light output in <1.5 minutes
- Light weight
- No-Short No-Fail™ wiring installation
- Auto-Voltage Input (208-277V)(50-60Hz AC, DC)  
277V is required for all 450W Pulse Start Metal Halide fixtures.
- True-sinusoidal, high-frequency lamp drive
- ± 3% lamp power regulation over line and lamp variations
- Auto compatible with AC or DC
- Flicker-Free
- Operates in ambient (still air) from -20°C to 55°C
- Superior color and lumen maintenance
- Stays lit over wide line voltage variations
- Full Dimming Range – to 135 System Watts
- Potted ballast
- Silent operation sound rated A
- Ideal crest factors of 1.4

## Recessed Remote – RTA Series Order Information

Catalog Numbers

Wattage	Split-Box
350W MH/PS	RTA0835-(a)(b)
400W MH	RTA0440-(a)(b)
400W MH/PS	RTA0840-(a)(b)
450W MH/PS	RTA0845-2(b)

(a)Voltage Suffix Key: Indicate voltage in space (a)

Auto Voltage Input (350-400W Only) (A)

(b)Options: Indicate options in space (b) (Factory Installed)

Quartz Standby (ETL Listed)

Q

400W MH/PS LINE SIDE CHARACTERISTICS @ VOLT IN				
	208V in	220V in	240V in	277V in
THD %	<7	<7	<7	<7
Max K Factor %	1.5	1.5	1.5	1.5
Min Power Factor %	99	99	99	99
BALLAST LINE CURRENT DATA				
	208V in	220V in	240V in	277V in
Starting Current	0.06	0.071	0.072	0.065
Operating Current	2.05	1.93	1.77	1.54
GENERAL INFORMATION				
	208V in	220V in	240V in	277V in
System Efficiency %	>94	>94	>94	>94
Ballast Factor at 413 System Watts	1.2	1.2	1.2	1.2
Light output at 135 System Watts (Full Dim)	12	12	12	12

Applies to both RTA/RTC



-20°C to 55°C Ambient Rated

**Remote – RTC Series Order Information**

Catalog Numbers

Wattage	Split-Box
350W MH/PS	RTC0835-(a)(b)
400W MH	RTC0440-(a)(b)
400W MH/PS	RTC0840-(a)(b)
450W MH/PS	RTC0845-2(b)

(a) Voltage Suffix Key: Indicate voltage in space (a)

Auto Voltage Input (350-400W Only) (A)

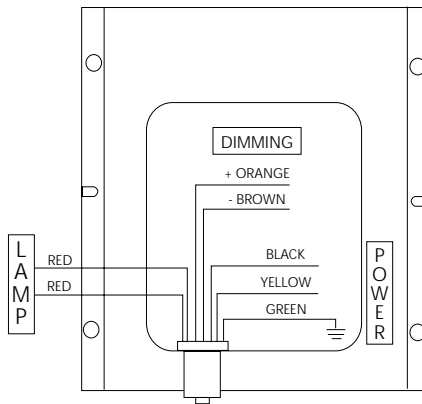
(b) Options: Indicate options in space (b) (Factory Installed)

Quartz Standby (ETL Listed) Q

Accessories: (Field Installed)

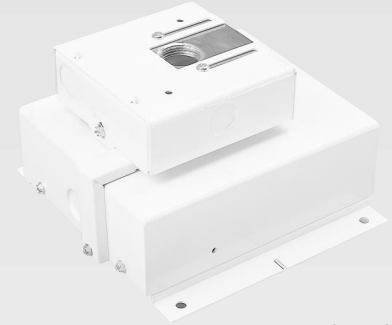
Mounting Hook - 3/4" Thread with Safety Snap-Lok™ HKSC

Swivel Pendant SP



**RTC Series Remote Electronic Ballast Enclosures**

Dimensions	Fixture Length	Fixture Width	Fixture Depth	Approx. Ship Wt.
	7.6"	7.5"	4.5"	5.5Lbs.



Lamp **NOT** Included

True-sinusoidal, high frequency, fully dimmable electronic ballast for Pulse Start metal halide lamps. Auto voltage input from 208-277 volts with a no-short, no-fail feature. Potted fabricated heavy duty aluminum housing. Can be remote mounted up to 10 feet. Auto external designed for recessed applications. 3/4" Hook or Pendant Mount options are available.

- Full power & light output in <1 minute
- Light weight
- No-Short No-Fail™ wiring installation
- Auto-Voltage Input (208-277V) (50-60Hz AC, DC)  
277V is required for all 450W Pulse Start Metal Halide fixtures.
- True-sinusoidal, high-frequency lamp drive
- Open lamp protection
- ± 3% lamp power regulation over line and lamp variations
- Auto compatible with AC or DC
- Flicker-Free
- Operates in ambient from -20°C to 55°C
- Superior color and lumen maintenance
- Stays lit over wide line voltage variations
- Full Dimming Range – down to 135 System Watts
- Potted ballast
- Silent operation sound rated A
- Ideal crest factors of 1.4